



CMC Construction Services

CMC CONSTRUCTION SERVICES BRIDGE OVERHANG BRACKETS



C-49 BRIDGE OVERHANG BRACKET

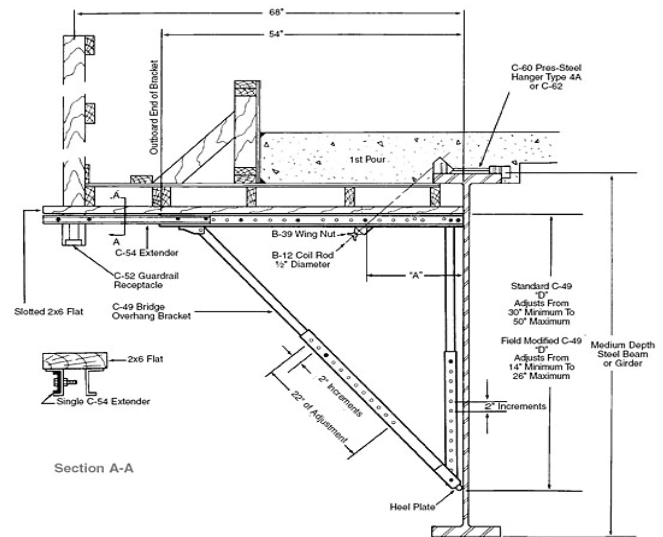
- Maximum adjustability to meet the the varied overhang forming requirements on either structural steel or precast/prestressed concrete beams.
- Can easily be mounted to steel beams, precast concrete beams and concrete box beams with the appropriate hanger devices.
- Final assembly can be easily accomplished at the job site during the presetting operation.
- Works with structural steel, precast/prestressed or concrete box beams. Lots of accessories available (Extenders, Guardrail Receptacles, Wall Plate Assemblies, etc.)
- Accommodates an adjustment range of 30" to 70" and can be mounted to steel beams, precast concrete beams and concrete box beams with the appropriate hanger devices.
- The C-49-JR Bridge Overhang Bracket is a smaller version of the C-49 for use on smaller bridge beams, with a vertical adjustment range of 16" to 28". The C-49-D Bridge Overhang Bracket has all the features of the C-49 Bracket, but has longer vertical and diagonal legs.

Engineering Services

- Professional overhang layout drawings by James "Leroy" Caldwell, P.E.
- Spacing calculations for overhangs as well as interior
- Deck forming details are available

Available Accessories

- Screed rail supports
- Beam hangers
- Coil rod
- Coil bolts
- Screed chairs
- Shim packs





CMC Construction Services

CMC CONSTRUCTION SERVICES **BRIDGE OVERHANG BRACKETS**

MLB MeadowBurke

HF-85 OVERHANG BRACKET

- The state-of-the-art standard Bridge Overhang Bracket is designed for use on steel and concrete girders. Easy and quick presetting on the ground is only one of the features.

HF-96 OVERHANG BRACKET

- Large horizontal channel member, 96" (8 ft.) in length.
- High strength can handle up to 10kip load under proper conditions.
- Special custom Brackets have been made up to 14 ft. in overhang length.
- Due to the rotational adjustability of the bracket, raised falsework is no longer necessary for inclined slab overhang. (Reduction of falsework of almost 100%)
- Diagonal member of bracket is adjustable in length (5'-9" to 8'-6"), height and distance for an effective transfer of the resulting forces, mainly due to the screed load.
- Higher degree of safety due to adjustable guardrail for sloped or super elevated decks.
- Gang forming of multiple Brackets with aluminum joist beams of up to 24 feet option available

