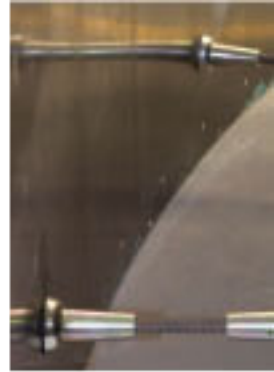


**R·M·D**  
**KWIKFORM**

**REFLEX**



The high grade form ply face on Reflex produces a high quality concrete finish.

## introducing reflex

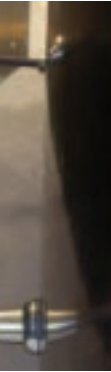
Reflex is the latest in RMD Kwikform's range of wall formwork products – it's our solution for the cost effective forming of reinforced concrete curved walls. Its galvanised steel frame, highgrade form ply face, and innovative design features allow for the setting of all curves efficiently and accurately, producing high quality concrete finishes.

The strong and robust design of Reflex withstands concrete pressures up to 60 kN/m<sup>2</sup> and can easily be adjusted for re-use site after site, without dismantling, for all curves above 2500mm radius.

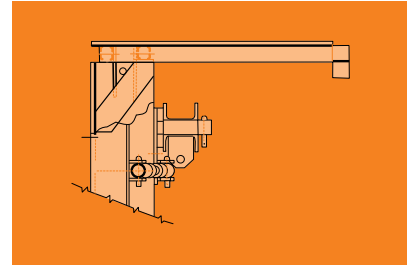
Reflex is the result of over 50 years' experience gained on major projects throughout the world. Our local network of branches means when you deal with RMD Kwikform you talk to people who understand the working environment, technical difficulties and challenges you face.

Panels are fixed with Reflex clamps eliminating the use of nut and bolt connectors.

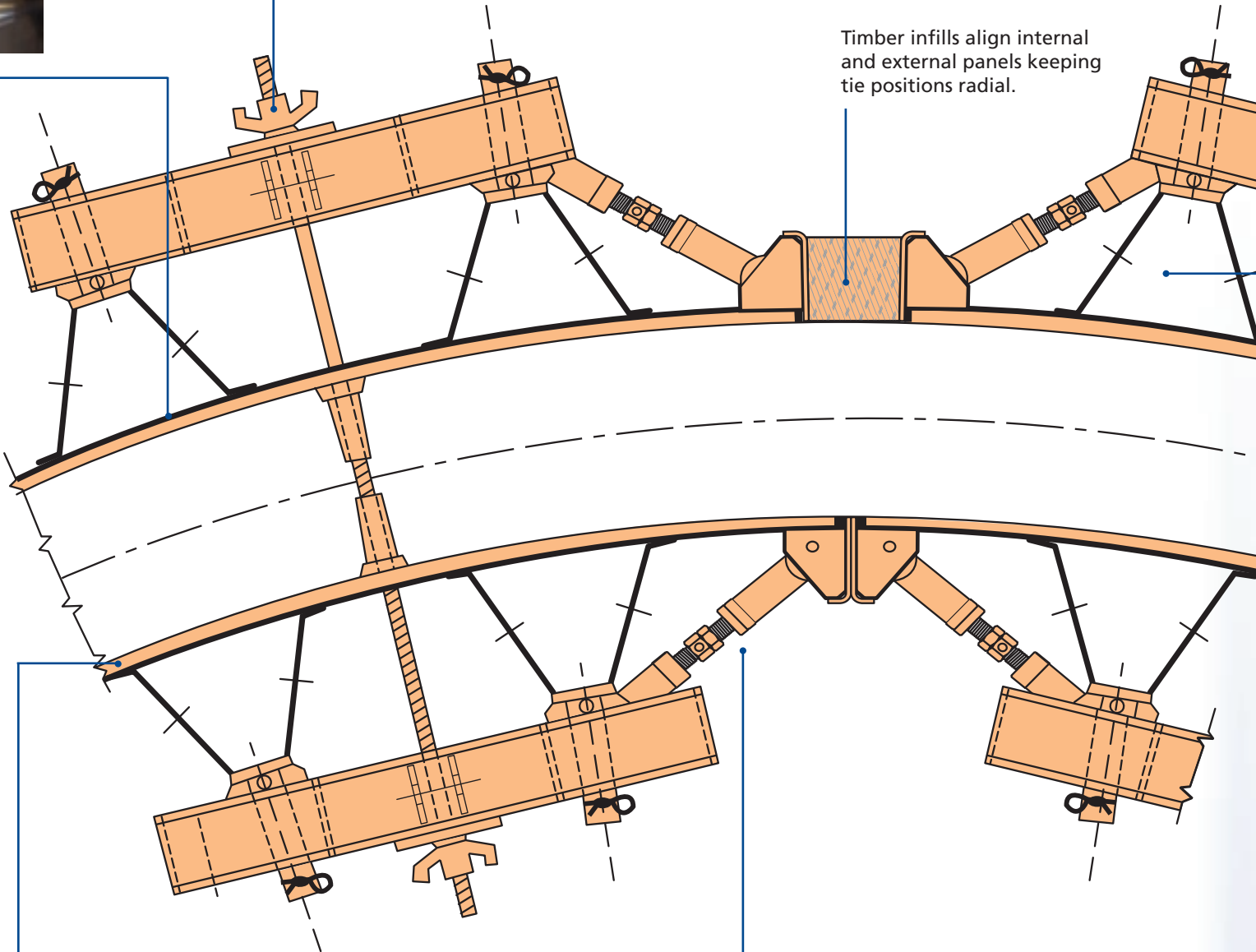




The internal and external panels are tied using 15mm diameter RMD Rapid Bar Tie System.



Timber infills align internal and external panels keeping tie positions radial.

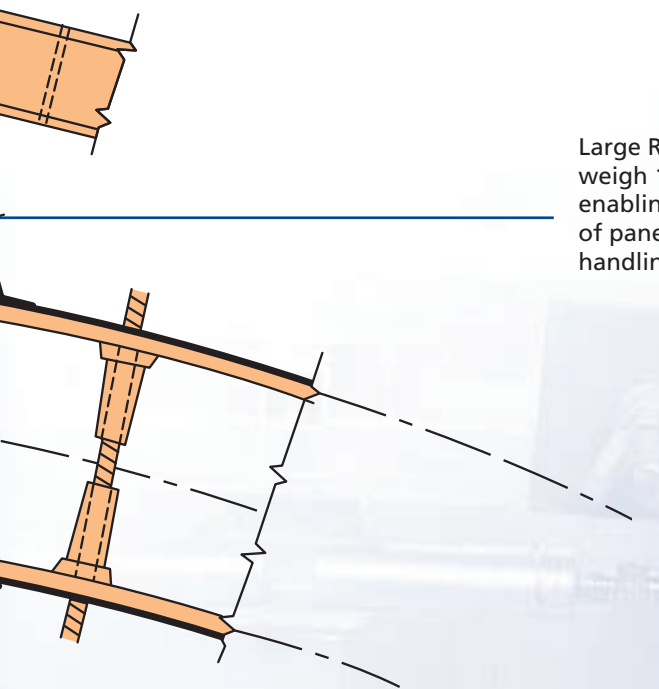


Reflex is infinitely adjustable from a flat plane to a minimum radius of 2500mm.

Robust turnbuckles enable accurate adjustment of panels to all curves.



Reflex's access platform and guard-rail provides a safe and secure working platform during site operations.



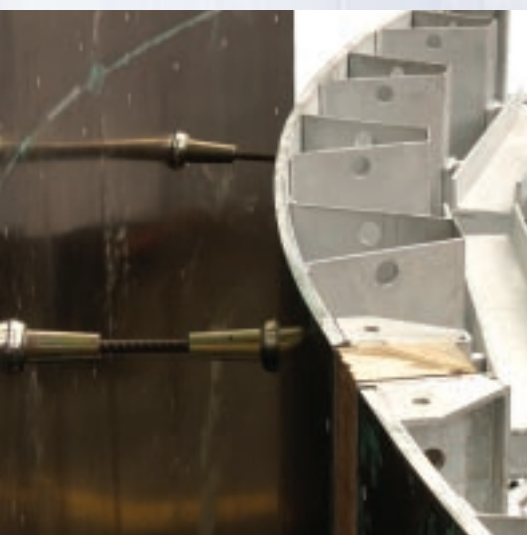
Large Reflex panels weigh 100 kg/m<sup>2</sup>, enabling ganging of panels for crane handling.



Reflex panel units remain assembled between uses, eliminating lost items and improving on-site productivity.



Reflex panels can be adjusted to form transition curves from one radius to another and parabolic curves.



## Reflex Dimensional Matrix

### EXTERNAL PANELS 2200

### INTERNAL PANELS 2075

External Diameter mm	External Circumfer	Quantity	End Infill	Panel Infill	WALL	Internal Diameter mm	Internal Circumfer	Quantity	Panel Infill
50000	157080	71	880	0	300	49400	155195	71	98.6
40000	125664	57	264	0	300	39400	123779	57	92
30000	94248	42	1848	0	300	29400	92363	42	81
20000	62832	28	1232	0	300	19400	60947	28	59
15000	47124	21	924	0	300	14400	45239	21	37
10560	33175	15	0	0	300	9960	31290	15	0
10000	31416	14	106	7	300	9400	29531	14	0
5000	15708	6	1052	158	300	4400	13823	6	0



Reflex panels are adjustable from a flat plane to a minimum radius of 2500mm.

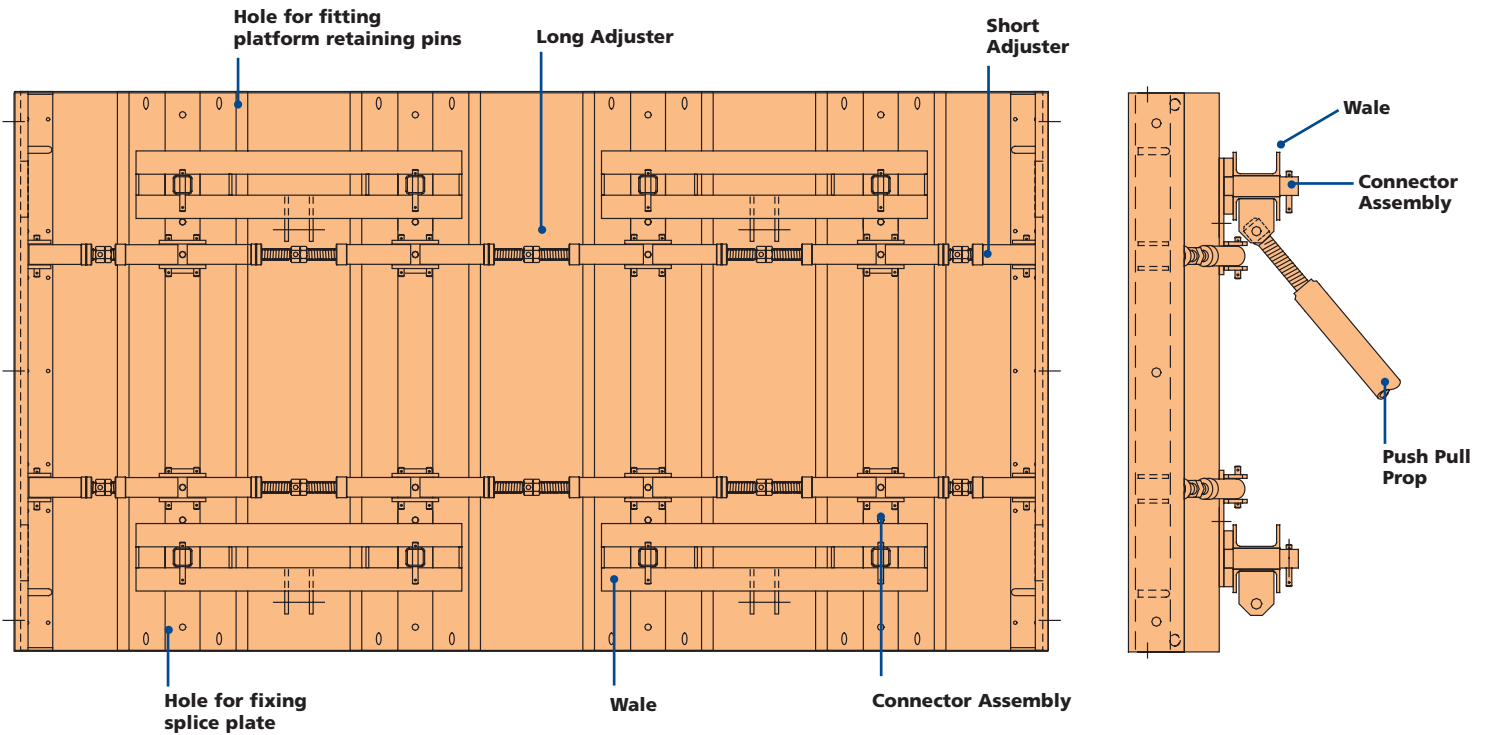
For radii of 5000mm and above, the external panels are connected together with Reflex clamps. The internal panels are set opposite the external panels allowing the same form ties holes to be used for any diameter.

The internal panels are spaced with timber infills and fixed with Reflex clamps.

For radii under 5000mm the internal panels are connected together with Reflex clamps and the external panels are spaced with timber infills and fixed with Reflex clamps.

Reflex panels can be combined for high pours and can be used as climbing forms for multi-pour structures. The forms are internally tied using 15mm Bar Tie system.

A short embedded Tie Bar, with Bar Tie steel cones, space the forms and are utilised as the form ties.



### MAX CONCRETE PRESSURE 60kN/m<sup>2</sup>

PANEL ASSEMBLIES (Excluding Access)								
Height (mm)	EXTERNAL		INTERNAL			Height (mm)	INFILL	
	Width (mm)	Weight (kg)	Height (mm)	Width (mm)	Weight (kg)		Width (mm)	Weight (kg)
2400	2200	465	2400	2075	456	2400	600	185
1200	2200	295	1200	2075	290	1200	600	115

## europa offices

United Kingdom  
Tel: +44 1922 743743  
Fax: +44 1922 743400

Ireland  
Tel: +353 1 8302500  
Fax: +353 1 8302741

Spain  
Tel: +34 91 5556104  
Fax: +34 91 5554745

Portugal  
Tel: +351 21 232 86 88  
Fax: +351 21 231 57 15

## asia offices

Hong Kong  
Tel: +852 2415 4882  
Fax: +852 2413 4797

Korea  
Tel: +82 2 545 2484  
Fax: +82 2 545 1878

Philippines  
Tel: +632 724 42 13  
Fax: +632 724 42 14

Taiwan  
Tel: +886 2 2698 7055  
Fax: +886 2 2698 1989

## middle east offices

UAE  
Tel: +971 6 5534173  
Fax: +971 6 5534327

Qatar  
Tel: +974 600937  
Fax: +974 606427

## south america offices

Chile  
Tel: +56 2 739 0610  
Fax: +56 2 739 1246

## australian offices

**RMD (Australia) Pty. Ltd.**  
PO Box 169, 66 Bennet Avenue,  
Melrose Park, South Australia, 5039.  
Tel: +61 8 8179 8200  
Fax: +61 8 8179 8201  
E-mail: [rmd.australia@rmdformwork.com](mailto:rmd.australia@rmdformwork.com)

**Adelaide Branch**  
66 Bennet Avenue, Melrose Park, SA, 5039.  
Tel: 08 8179 8240 Fax: 08 8179 8241  
E-mail: [rmd.adelaide@rmdformwork.com](mailto:rmd.adelaide@rmdformwork.com)

**Darwin Branch**  
135 Coonawarra Road, Winnellie, NT 0621.  
Tel: 08 8984 4696 Fax: 08 8947 0035  
E-mail: [rmd.darwin@rmdformwork.com](mailto:rmd.darwin@rmdformwork.com)

**New South Wales  
Sydney Regional Office**  
330 Edgar Street, Bankstown, NSW 2200.  
Tel: 02 9772 2144 Fax: 02 9774 2516  
E-mail: [rmd.sydney@rmdformwork.com](mailto:rmd.sydney@rmdformwork.com)

**Newcastle Branch**  
47 Milford Street, Islington, NSW 2296.  
Tel: 02 4969 6344 Fax: 02 4962 2761  
E-mail: [rmd.newcastle@rmdformwork.com](mailto:rmd.newcastle@rmdformwork.com)

**Victoria/Tasmania  
Melbourne Regional Office**  
Unit 5/60 Camp Road, Broadmeadows, VIC 3047.  
Tel: 03 9359 9733 Fax: 03 9359 9761  
E-mail: [rmd.melbourne@rmdformwork.com](mailto:rmd.melbourne@rmdformwork.com)

**Hobart Branch**  
5 Lampton Ave, Derwent Park, TAS 7009.  
Tel: 03 6272 2566 Fax: 03 6272 2611  
E-mail: [rmd.hobart@rmdformwork.com](mailto:rmd.hobart@rmdformwork.com)

**Launceston Branch**  
9 Churchill Park Drive, Invermay, TAS 7248.  
Tel: 03 6331 3751 Fax: 03 6331 9751  
E-mail: [rmd.launceston@rmdformwork.com](mailto:rmd.launceston@rmdformwork.com)

**Queensland  
Brisbane Regional Office**  
163 Crockford St, Northgate, QLD 4013.  
Tel: 07 3266 3022 Fax: 07 3266 1054  
E-mail: [rmd.brisbane@rmdformwork.com](mailto:rmd.brisbane@rmdformwork.com)

**Maroochydhore Branch**  
32 Page Street, Kunda Park, QLD 4556.  
Tel: 07 5445 3244 Fax: 07 5445 4822  
E-mail: [rmd.maroochydhore@rmdformwork.com](mailto:rmd.maroochydhore@rmdformwork.com)

**Bundaberg Branch**  
1 Turner Street, West Bundaberg, QLD 4670.  
Tel: 07 4152 3899 Fax: 07 4152 7978  
E-mail: [rmd.bundaberg@rmdformwork.com](mailto:rmd.bundaberg@rmdformwork.com)

**Rockhampton Branch**  
35 Quinn Street,  
Kawana, Nth Rockhampton, QLD 4701.  
Tel: 07 4927 5133 Fax: 07 4922 4075  
E-mail: [rmd.rockhampton@rmdformwork.com](mailto:rmd.rockhampton@rmdformwork.com)

**Gold Coast Branch**  
Ern Harley Drive,  
Burleigh Gardens Estate, QLD 4220.  
Tel: 07 5593 4677 Fax: 07 5593 4828  
E-mail: [rmd.goldcoast@rmdformwork.com](mailto:rmd.goldcoast@rmdformwork.com)

**Townsville Branch**  
11 Whitehouse Street, Garbutt, QLD 4814.  
Tel: 07 4779 0544 Fax: 07 4725 1364  
E-mail: [rmd.townsville@rmdformwork.com](mailto:rmd.townsville@rmdformwork.com)

**Cairns Branch**  
78-80 Ishmael Road, Earlville, QLD 4870.  
Tel: 07 4054 5149 Fax: 07 4054 5198  
E-mail: [rmd.cairns@rmdformwork.com](mailto:rmd.cairns@rmdformwork.com)

**Mackay Branch**  
Block 8D, Graeme Heggie Street,  
Mackay, QLD 4740.  
Tel: 07 4955 1228 Fax: 07 4955 3052  
E-mail: [rmd.mackay@rmdformwork.com](mailto:rmd.mackay@rmdformwork.com)

**Western Australia  
Perth Regional Office**  
6 Energy Street, Malaga, WA 6062.  
Tel: 08 9248 5900 Fax: 08 9248 5800  
E-mail: [rmd.perth@rmdformwork.com](mailto:rmd.perth@rmdformwork.com)

**Naval Base Branch**  
43 Dooley Street, Naval Base, WA 6165.  
Tel: 08 9410 2777 Fax: 08 9410 2779  
E-mail: [rmd.navalbase@rmdformwork.com](mailto:rmd.navalbase@rmdformwork.com)

## new zealand offices

**RMD (New Zealand) Ltd.**  
PO Box 22-316, 101-105 Station Road,  
Otahuhu, Auckland 6, New Zealand.  
Tel: +64 9 276 5955  
Fax: +64 9 276 6732  
E-mail: [rmd.auckland@rmdformwork.com](mailto:rmd.auckland@rmdformwork.com)

**Christchurch Branch**  
1 Parkhouse Road, Sockburn, Christchurch.  
Tel: +64 3 348 9621 Fax: +64 3 348 9602  
E-mail: [rmd.christchurch@rmdformwork.com](mailto:rmd.christchurch@rmdformwork.com)

**Wellington Branch**  
PO Box 13509, Johnsonville, Wellington.  
Tel: +64 4 232 9300 Fax: +64 4 232 4144  
E-mail: [rmd.wellington@rmdformwork.com](mailto:rmd.wellington@rmdformwork.com)

[www.rmdkwikform.com](http://www.rmdkwikform.com)

A member of Interserve Plc.