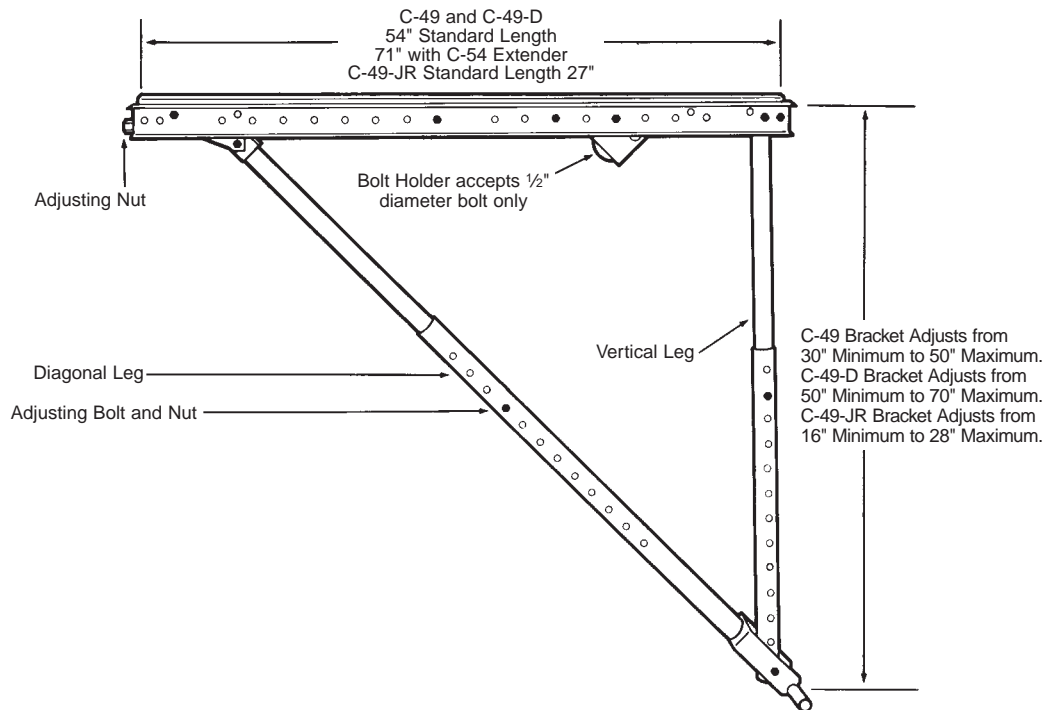


C-49, C-49-D and C-49-JR Bridge Overhang Brackets



Features:

Dayton Superior Bridge Overhang Brackets are designed with maximum adjustability to meet the varied overhang forming requirements on structural steel and precast/prestressed concrete beams. The C-49 and C-49-D Bridge Overhang Brackets accommodate an adjustment range of 30" to 70" and can be mounted to steel beams, precast concrete beams and concrete box beams with the appropriate hanger devices. Both of the bracket models can be easily and quickly preset on the ground and then set in place as needed.

The C-49-D Bridge Overhang Bracket has all of the features of the C-49 bracket but has longer vertical and diagonal legs. The longer legs, and resulting increase in adjustment, allow the bracket to be used on deep structural steel beams to position the construction load transfer near the beam's bottom flange.

Various accessories are available for the C-49 and C-49-D brackets. The Extender, Guardrail Receptacles and Wall Plate Assembly all add to the versatility of the Dayton Superior Bridge Overhang Brackets.

The C-49-JR Bridge Overhang Bracket is a small version of the C-49 bracket designed for use on smaller bridge beams. The C-49-JR has all the versatile design features of the bigger C-49 bracket and a vertical adjustment range of 16" to 28".

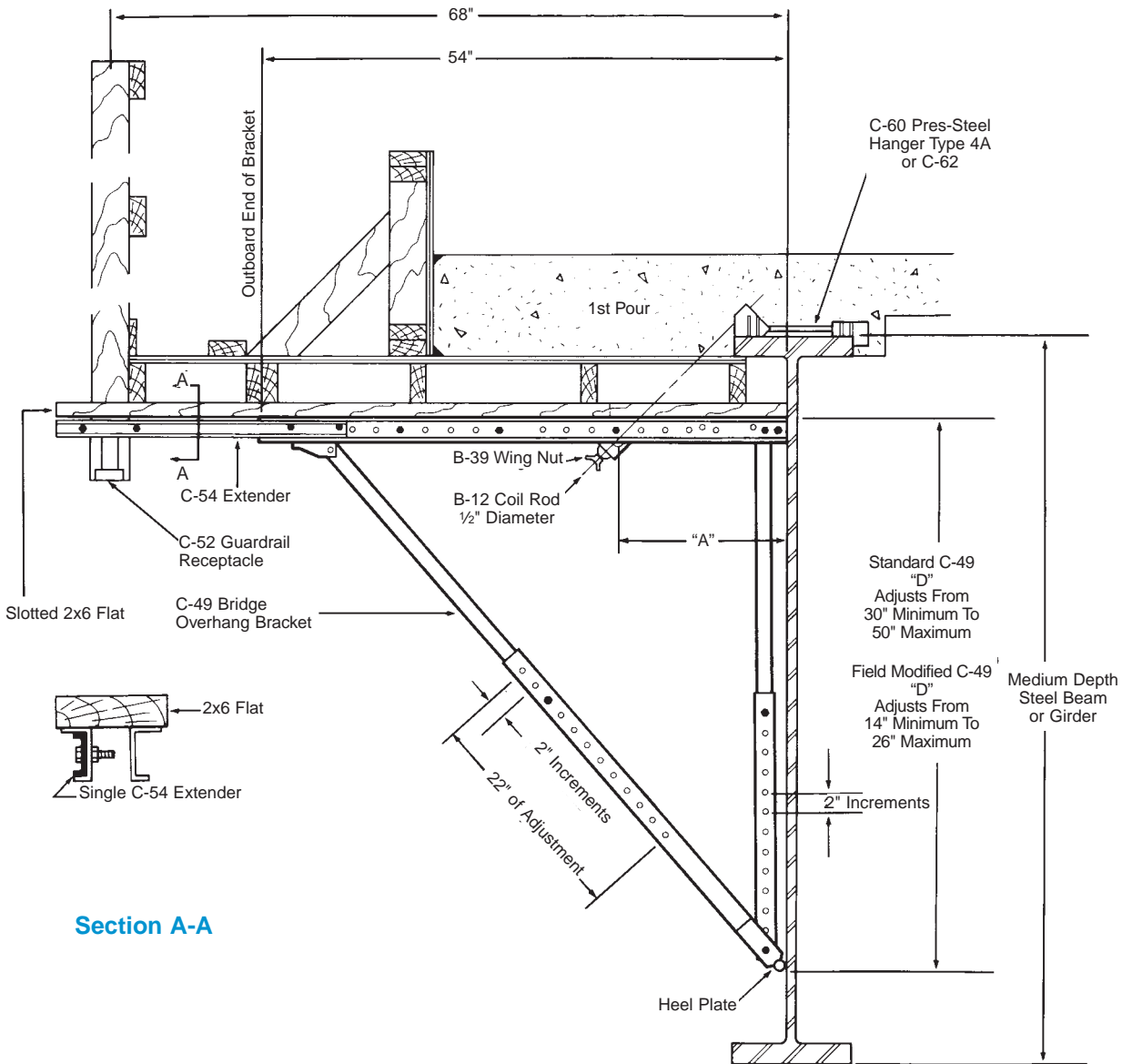
When requested, the C-49, C-49-D and C-49-JR brackets can both be shipped "knocked down" for ease in handling and shipping. Final assembly can be easily accomplished at the job site during the presetting operation.

Warning: Overhang brackets should be adjusted to proper grade during the normal "dry run" operation. DO NOT attempt an upward adjustment during the concrete pouring operation. Lowering the bracket adjustment is permissible during the concrete pour.

To Order:
Specify: (1) quantity, (2) name.

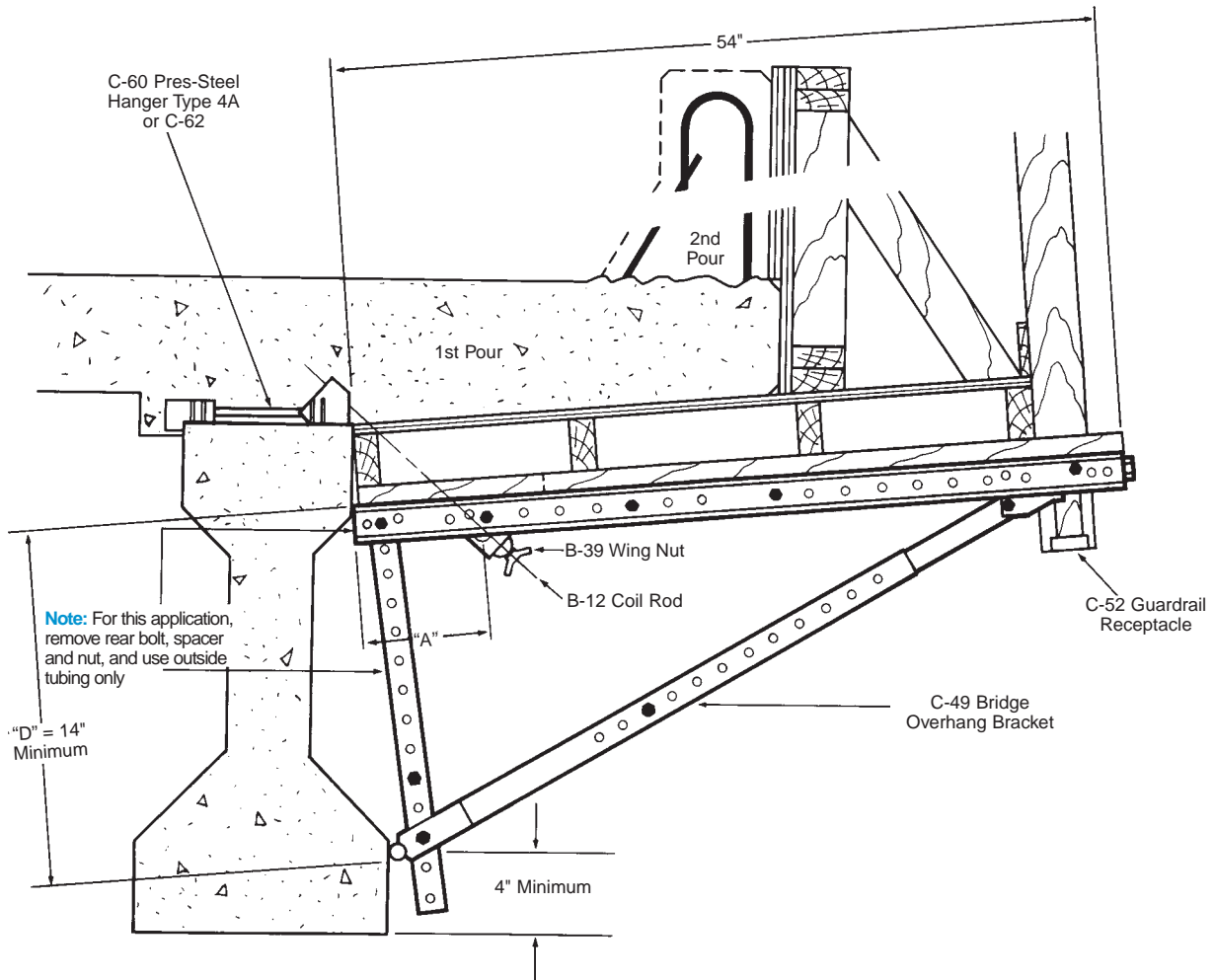
Example:
60 pcs. C-49 Bridge Overhang Brackets.

C-49 Bridge Overhang Bracket Used on Mid Depth Structural Steel



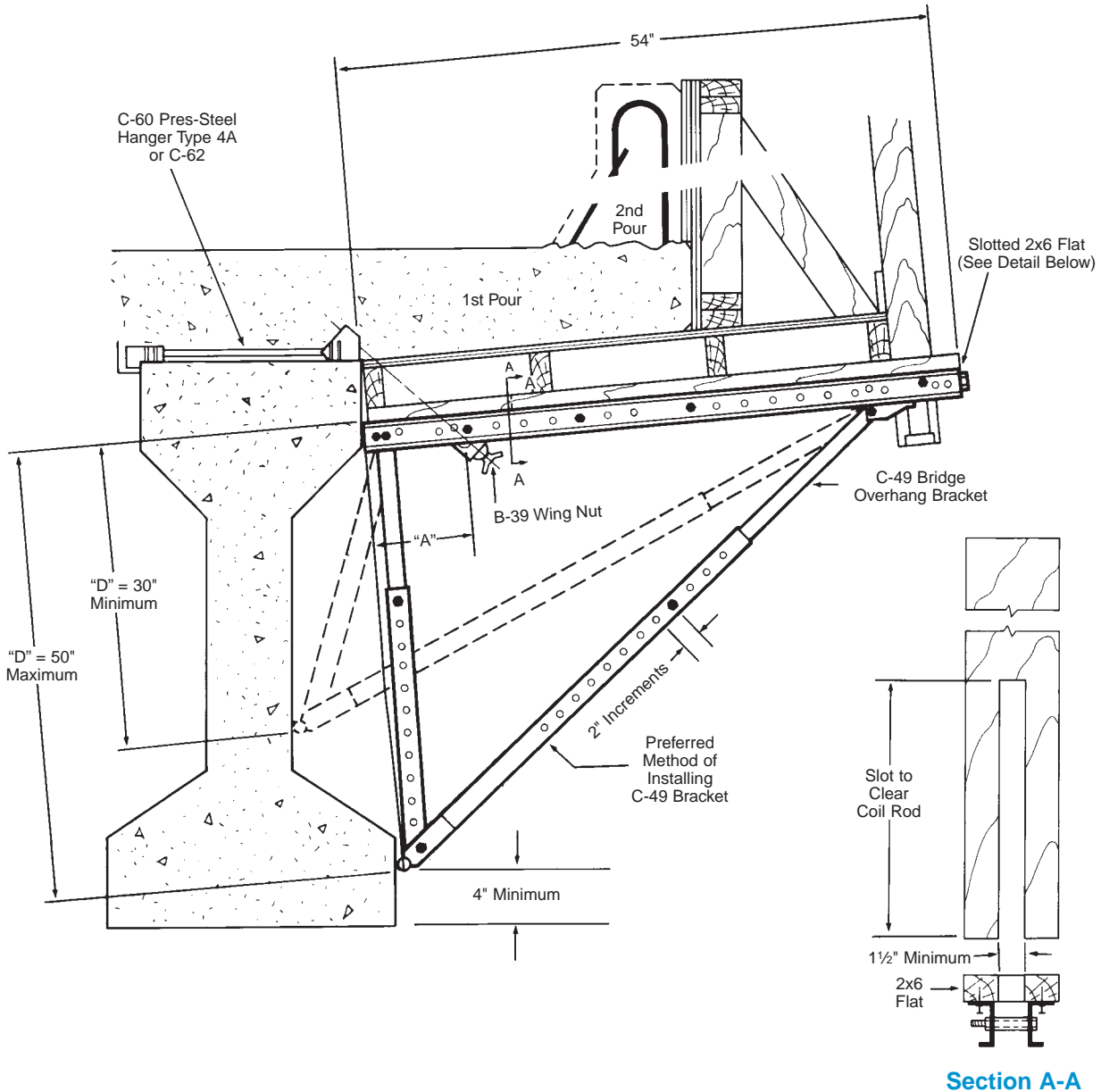
The vertical height of the C-49 bracket can be quickly and easily adjusted to transfer construction loads closer to the bottom flange. Moving the construction loads to the lower flange area reduces the twisting and bending tendency of the beam

C-49 Bridge Overhang Bracket Used on AASHTO Type II Precast Beams



The C-49 bracket's versatility serves the smaller precast beams very well. By using only the outside tube of the vertical leg, the vertical height of the bracket can be reduced to a minimum of 14".

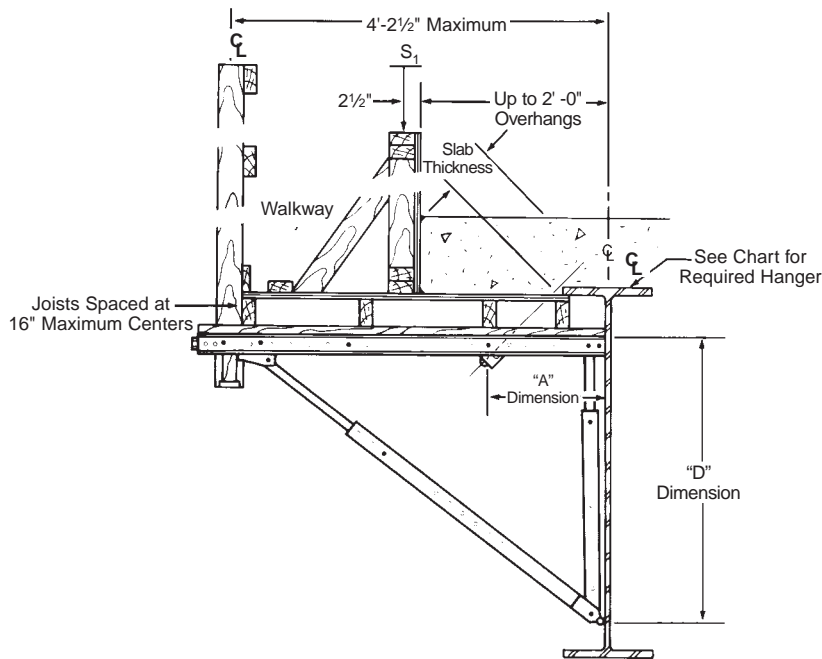
C-49 Bridge Overhang Bracket Used on AASHTO Type III or Larger Precast Beams



The C-49 bracket is very versatile and can be easily and quickly adjusted and configured to fit most types and sizes of precast/prestressed concrete bridge beams to support the required deck overhang formwork.

Spacing Tables for C-49 Bracket

C-49 Bridge Overhang Bracket and Exterior Hanger Spacings For use on up to 2' -0" overhangs on steel beams or girders



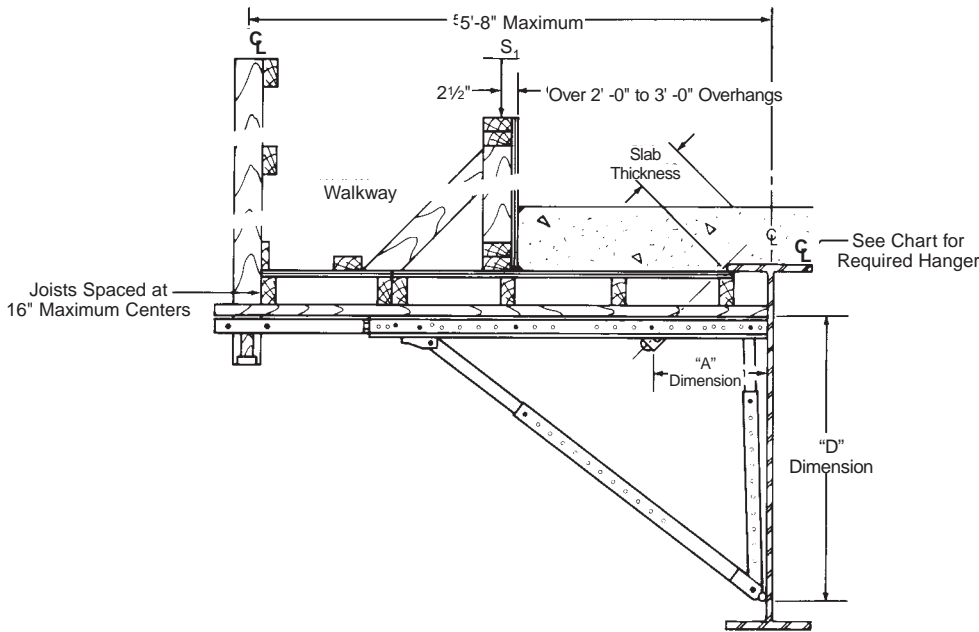
Design Load PSF	Slab Thickness	Bracket "D" Dimension	Screed Load Per Bracket = S ₁						Hanger SWL
			1,500 lbs.	1,250 lbs.	750 lbs.	500 lbs.	250 lbs.	0 lbs.	
Bracket "A" Dimension = 12 ¹ / ₈ " or 14 ³ / ₈ "									
125	6"	30"	4'-3"	5'-1"	6'-8"	7'-6"	8'-0"	8'-0"	4000
			8'-0"	8'-0"	8'-0"	8'-0"	8'-0"	8'-0"	6000
125	6"	40"	4'-3"	5'-1"	6'-8"	7'-6"	8'-0"	8'-0"	4000
			8'-0"	8'-0"	8'-0"	8'-0"	8'-0"	8'-0"	6000
125	6"	50"	4'-3"	5'-1"	6'-8"	7'-6"	8'-0"	8'-0"	4000
			8'-0"	8'-0"	8'-0"	8'-0"	8'-0"	8'-0"	6000
150	8"	30"	3'-9"	4'-6"	5'-11"	6'-8"	7'-5"	8'-0"	4000
			7'-10"	8'-0"	8'-0"	8'-0"	8'-0"	8'-0"	6000
150	8"	40"	3'-9"	4'-6"	5'-11"	6'-8"	7'-5"	8'-0"	4000
			7'-10"	8'-0"	8'-0"	8'-0"	8'-0"	8'-0"	6000
150	8"	50"	3'-9"	4'-6"	5'-11"	6'-8"	7'-5"	8'-0"	4000
			7'-10"	8'-0"	8'-0"	8'-0"	8'-0"	8'-0"	6000
175	10"	30"	3'-5"	4'-0"	5'-4"	6'-0"	6'-7"	7'-3"	4000
			7'-1"	7'-8"	8'-0"	8'-0"	8'-0"	8'-0"	6000
175	10"	40"	3'-5"	4'-0"	5'-4"	6'-0"	6'-7"	7'-3"	4000
			7'-1"	7'-8"	8'-0"	8'-0"	8'-0"	8'-0"	6000
175	10"	50"	3'-5"	4'-0"	5'-4"	6'-0"	6'-7"	7'-3"	4000
			7'-1"	7'-8"	8'-0"	8'-0"	8'-0"	8'-0"	6000
200	12"	30"	3'-1"	3'-8"	4'-10"	5'-5"	6'-0"	6'-7"	4000
			6'-5"	7'-0"	8'-0"	8'-0"	8'-0"	8'-0"	6000
200	12"	40"	3'-1"	3'-8"	4'-10"	5'-5"	6'-0"	6'-7"	4000
			6'-5"	7'-0"	8'-0"	8'-0"	8'-0"	8'-0"	6000
200	12"	50"	3'-1"	3'-8"	4'-10"	5'-5"	6'-0"	6'-7"	4000
			6'-5"	7'-0"	8'-0"	8'-0"	8'-0"	8'-0"	6000

Note: Design includes 50 PSF live load on walk way area.

Overhang form lumber must be checked to make sure it will span the selected spacing.

Warning: Contact our Technical Service Department for recommended spacings, when conditions on your specific project vary from those shown.

C-49 Bridge Overhang Bracket and Exterior Hanger Spacings For use on over 2' -0" to 3' -0" overhangs on steel beams or girders



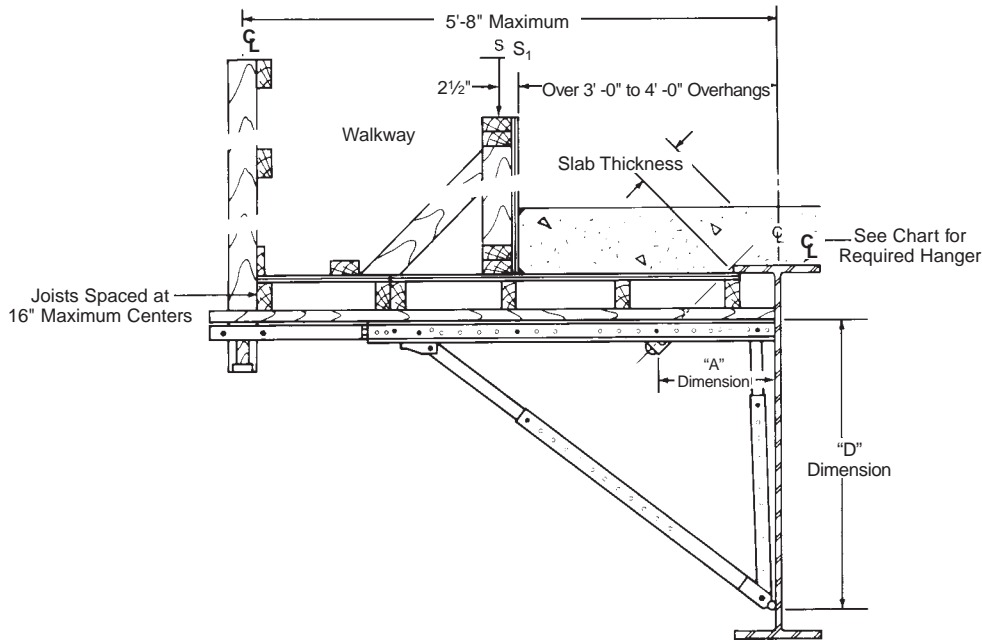
Design Load PSF	Slab Thickness	Bracket "D" Dimension	Screed Load Per Bracket = S ₁						Hanger SWL
			1,500 lbs.	1,250 lbs.	750 lbs.	500 lbs.	250 lbs.	0 lbs.	
			Bracket "A" Dimension = 12 ¹ / ₈ " or 14 ¹ / ₈ "						
125	6"	30"	2'-10"	3'-5"	4'-6"	5'-1"	5'-7"	6'-2"	4000
			6'-0"	6'-6"	7'-7"	8'-0"	8'-0"	8'-0"	6000
125	6"	40"	2'-10"	3'-5"	4'-6"	5'-1"	5'-7"	6'-2"	4000
			6'-0"	6'-6"	7'-7"	8'-0"	8'-0"	8'-0"	6000
125	6"	50"	2'-10"	3'-5"	4'-6"	5'-1"	5'-7"	6'-2"	4000
			6'-0"	6'-6"	7'-7"	8'-0"	8'-0"	8'-0"	6000
150	8"	30"	2'-6"	3'-0"	3'-11"	4'-5"	4'-11"	5'-5"	4000
			5'-3"	5'-8"	6'-8"	7'-2"	7'-7"	8'-0"	6000
150	8"	40"	2'-6"	3'-0"	3'-11"	4'-5"	4'-11"	5'-5"	4000
			5'-3"	5'-8"	6'-8"	7'-2"	7'-7"	8'-0"	6000
150	8"	50"	2'-6"	3'-0"	3'-11"	4'-5"	4'-11"	5'-5"	4000
			5'-3"	5'-8"	6'-8"	7'-2"	7'-7"	8'-0"	6000
175	10"	30"	2'-3"	2'-8"	3'-6"	3'-11"	4'-4"	4'-9"	4000
			4'-8"	5'-1"	5'-11"	6'-4"	6'-9"	7'-2"	6000
175	10"	40"	2'-3"	2'-8"	3'-6"	3'-11"	4'-4"	4'-9"	4000
			4'-8"	5'-1"	5'-11"	6'-4"	6'-9"	7'-2"	6000
175	10"	50"	2'-3"	2'-8"	3'-6"	3'-11"	4'-4"	4'-9"	4000
			4'-8"	5'-1"	5'-11"	6'-4"	6'-9"	7'-2"	6000
200	12"	30"	2'-0"	2'-5"	3'-2"	3'-6"	3'-11"	4'-4"	4000
			4'-2"	4'-7"	5'-4"	5'-9"	6'-1"	6'-6"	6000
200	12"	40"	2'-0"	2'-5"	3'-2"	3'-6"	3'-11"	4'-4"	4000
			4'-2"	4'-7"	5'-4"	5'-9"	6'-1"	6'-6"	6000
200	12"	50"	2'-0"	2'-5"	3'-2"	3'-6"	3'-11"	4'-4"	4000
			4'-2"	4'-7"	5'-4"	5'-9"	6'-1"	6'-6"	6000

Note: Design includes 50 PSF live load on walk way area.

Overhang form lumber must be checked to make sure it will span the selected spacing.

Warning: Contact our Technical Service Department for recommended spacings, when conditions on your specific project vary from those shown.

C-49 Bridge Overhang Bracket and Exterior Hanger Spacings For use on over 3' -0" to 4' -0" overhangs on steel beams or girders



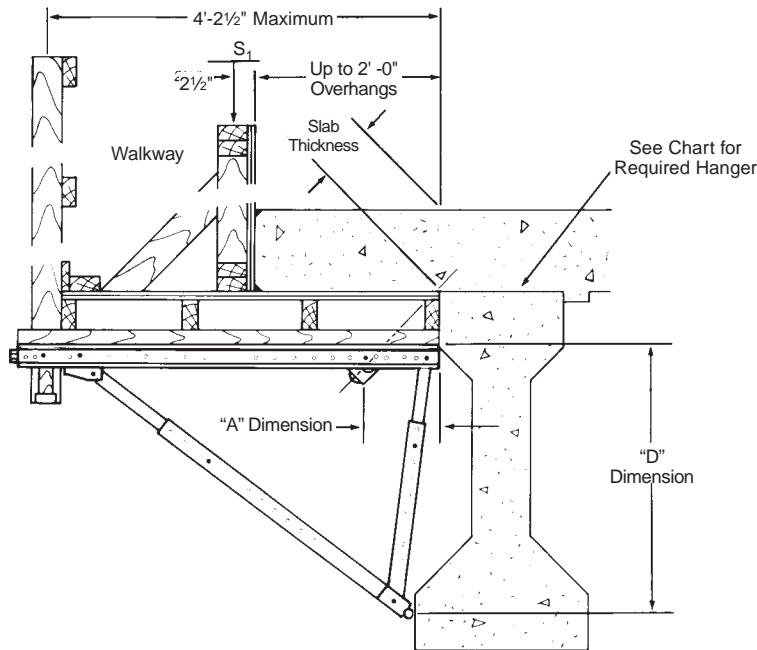
Design Load PSF	Slab Thickness	Bracket "D" Dimension	Screed Load Per Bracket = S ₁						Hanger SWL
			1,500 lbs.	1,250 lbs.	750 lbs.	500 lbs.	250 lbs.	0 lbs.	
			Bracket "A" Dimension = 12 ¹ / ₈ " or 14 ¹ / ₈ "						
125	6"	30"	2'-5"	2'-11"	3'-10"	4'-4"	4'-10"	5'-3"	4000
			4'-11"	5'-7"	6'-6"	7'-0"	7'-6"	7'-11"	6000
125	6"	40"	2'-5"	2'-11"	3'-10"	4'-4"	4'-10"	5'-3"	4000
			5'-1"	5'-7"	6'-6"	7'-0"	7'-6"	7'-11"	6000
125	6"	50"	2'-5"	2'-11"	3'-10"	4'-4"	4'-10"	5'-3"	4000
			5'-1"	5'-7"	6'-6"	7'-0"	7'-6"	7'-11"	6000
150	8"	30"	2'-0"	2'-6"	3'-4"	3'-8"	4'-1"	4'-6"	4000
			4'-4"	4'-9"	5'-7"	6'-0"	6'-5"	6'-9"	6000
150	8"	40"	2'-1"	2'-6"	3'-4"	3'-8"	4'-1"	4'-6"	4000
			4'-4"	4'-9"	5'-7"	6'-0"	6'-5"	6'-9"	6000
150	8"	50"	2'-1"	2'-6"	3'-4"	3'-8"	4'-1"	4'-6"	4000
			4'-4"	4'-9"	5'-7"	6'-0"	6'-5"	6'-9"	6000
175	10"	30"	1'-9"	2'-2"	2'-11"	3'-3"	3'-7"	3'-11"	4000
			3'-10"	4'-2"	4'-10"	5'-3"	5'-7"	5'-11"	6000
175	10"	40"	1'-10"	2'-2"	2'-11"	3'-3"	3'-7"	3'-11"	4000
			3'-10"	4'-2"	4'-10"	5'-3"	5'-7"	5'-11"	6000
175	10"	50"	1'-10"	2'-2"	2'-11"	3'-3"	3'-7"	3'-11"	4000
			3'-10"	4'-2"	4'-10"	5'-3"	5'-7"	5'-11"	6000
200	12"	30"	1'-7"	1'-11"	2'-7"	2'-10"	3'-2"	3'-6"	4000
			3'-6"	3'-8"	4'-4"	4'-8"	4'-11"	5'-3"	6000
200	12"	40"	1'-7"	1'-11"	2'-7"	2'-10"	3'-2"	3'-6"	4000
			3'-5"	3'-8"	4'-4"	4'-8"	4'-11"	5'-3"	6000
200	12"	50"	1'-7"	1'-11"	2'-7"	2'-10"	3'-2"	3'-6"	4000
			3'-5"	3'-8"	4'-4"	4'-8"	4'-11"	5'-3"	6000

Note: Design includes 50 PSF live load on walk way area.
Overhang form lumber must be checked to make sure it will span the selected spacing.

Warning: Contact our Technical Service Department for recommended spacings, when conditions on your specific project vary from those shown.

C-49 Bridge Overhang Bracket and Exterior Hanger Spacings

For use on up to 2' -0" overhangs on precast/prestressed concrete beams

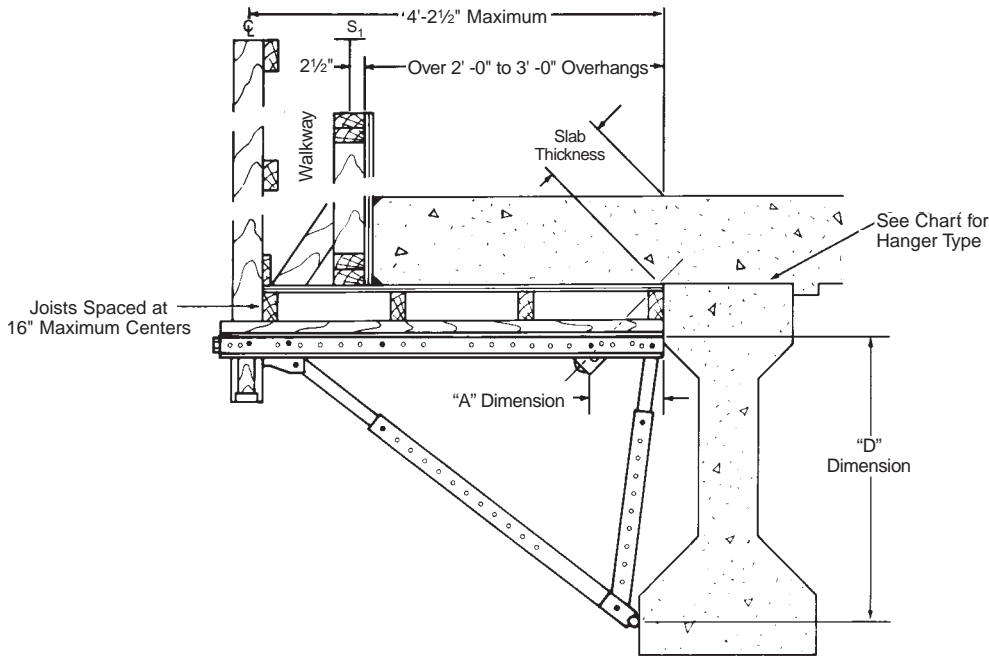


Design Load PSF	Slab Thickness	Bracket "D" Dimension	Screed Load Per Bracket = S ₁						Hanger SWL
			1,500 lbs.	1,250 lbs.	750 lbs.	500 lbs.	250 lbs.	0 lbs.	
			Bracket "A" Dimension = 14 ⁵ / ₈ " or 17 ¹ / ₈ "						
125	6"	50"	3'-0"	3'-6"	4'-8"	5'-3"	5'-10"	6'-5"	4000
			6'-2"	6'-9"	7'-11"	8'-0"	8'-0"	8'-0"	6000
125	6"	60"	3'-0"	3'-6"	4'-8"	5'-3"	5'-10"	6'-5"	4000
			6'-2"	6'-9"	7'-11"	8'-0"	8'-0"	8'-0"	6000
125	6"	70"	3'-0"	3'-6"	4'-8"	5'-3"	5'-10"	6'-5"	4000
			6'-2"	6'-9"	7'-11"	8'-0"	8'-0"	8'-0"	6000
150	8"	50"	2'-7"	3'-1"	4'-1"	4'-7"	5'-1"	5'-7"	4000
			5'-5"	5'-11"	6'-11"	7'-5"	7'-11"	8'-0"	6000
150	8"	60"	2'-7"	3'-1"	4'-1"	4'-7"	5'-1"	5'-7"	4000
			5'-5"	5'-11"	6'-11"	7'-5"	7'-11"	8'-0"	6000
150	8"	70"	2'-7"	3'-1"	4'-1"	4'-7"	5'-1"	5'-7"	4000
			5'-5"	5'-11"	6'-11"	7'-5"	7'-11"	8'-0"	6000
175	10"	50"	2'-4"	2'-9"	3'-8"	4'-1"	4'-6"	5'-0"	4000
			4'-10"	5'-3"	6'-2"	6'-7"	7'-1"	7'-6"	6000
175	10"	60"	2'-4"	2'-9"	3'-8"	4'-1"	4'-6"	5'-0"	4000
			4'-10"	5'-3"	6'-2"	6'-7"	7'-1"	7'-6"	6000
175	10"	70"	2'-4"	2'-9"	3'-8"	4'-1"	4'-6"	5'-0"	4000
			4'-10"	5'-3"	6'-2"	6'-7"	7'-1"	7'-6"	6000
200	12"	50"	2'-1"	2'-6"	3'-3"	3'-8"	4'-1"	4'-6"	4000
			4'-4"	4'-9"	5'-7"	5'-11"	6'-4"	6'-9"	6000
200	12"	60"	2'-1"	2'-6"	3'-3"	3'-8"	4'-1"	4'-6"	4000
			4'-4"	4'-9"	5'-7"	5'-11"	6'-4"	6'-9"	6000
200	12"	70"	2'-1"	2'-6"	3'-3"	3'-8"	4'-1"	4'-6"	4000
			4'-4"	4'-9"	5'-7"	5'-11"	6'-4"	6'-9"	6000

Note: Design includes 50 PSF live load on walk way area.
Overhang form lumber must be checked to make sure it will span the selected spacing.

Warning: Contact our Technical Service Department for recommended spacings, when conditions on your specific project vary from those shown.

C-49 Bridge Overhang Bracket and Exterior Hanger Spacings For use on over 2' -0" to 3' -0" overhangs on precast/prestressed concrete beams



Design Load PSF	Slab Thickness	Bracket "D" Dimension	Screed Load Per Bracket = S ₁						Hanger SWL
			1,500 lbs.	1,250 lbs.	750 lbs.	500 lbs.	250 lbs.	0 lbs.	
			Bracket "A" Dimension = 7 ¹ / ₈ " or 9 ¹ / ₈ "						
125	6"	30"	3'-0"	3'-7"	4'-9"	5'-4"	5'-11"	6'-6"	4000
			6'-3"	6'-10"	8'-0"	8'-0"	8'-0"	8'-0"	6000
125	6"	40"	3'-0"	3'-7"	4'-9"	5'-4"	5'-11"	6'-6"	4000
			6'-3"	6'-10"	8'-0"	8'-0"	8'-0"	8'-0"	6000
125	6"	50"	3'-0"	3'-7"	4'-9"	5'-4"	5'-11"	6'-6"	4000
			6'-3"	6'-10"	8'-0"	8'-0"	8'-0"	8'-0"	6000
150	8"	30"	2'-7"	3'-1"	4'-0"	4'-6"	5'-0"	5'-6"	4000
			5'-4"	5'-10"	6'-10"	7'-4"	7'-9"	8'-0"	6000
150	8"	40"	2'-7"	3'-1"	4'-0"	4'-6"	5'-0"	5'-6"	4000
			5'-4"	5'-10"	6'-10"	7'-4"	7'-9"	8'-0"	6000
150	8"	50"	2'-7"	3'-1"	4'-0"	4'-6"	5'-0"	5'-6"	4000
			5'-4"	5'-10"	6'-10"	7'-4"	7'-9"	8'-0"	6000
175	10"	30"	2'-3"	2'-8"	3'-6"	3'-11"	4'-4"	4'-10"	4000
			4'-8"	5'-1"	5'-11"	6'-4"	6'-9"	7'-3"	6000
175	10"	40"	2'-3"	2'-8"	3'-6"	3'-11"	4'-4"	4'-10"	4000
			4'-8"	5'-1"	5'-11"	6'-4"	6'-9"	7'-3"	6000
175	10"	50"	2'-3"	2'-8"	3'-6"	3'-11"	4'-4"	4'-10"	4000
			4'-8"	5'-1"	5'-11"	6'-4"	6'-9"	7'-3"	6000
200	12"	30"	2'-0"	2'-4"	3'-1"	3'-6"	3'-10"	4'-3"	4000
			4'-1"	4'-6"	5'-3"	5'-8"	6'-0"	6'-5"	6000
200	12"	40"	2'-0"	2'-4"	3'-1"	3'-6"	3'-10"	4'-3"	4000
			4'-1"	4'-6"	5'-3"	5'-8"	6'-0"	6'-5"	6000
200	12"	50"	2'-0"	2'-4"	3'-1"	3'-6"	3'-10"	4'-3"	4000
			4'-1"	4'-6"	5'-3"	5'-8"	6'-0"	6'-5"	6000

Note: Design includes 50 PSF live load on walkway area.

Overhang form lumber must be checked to make sure it will span the selected spacing.

Warning: Contact Dayton Superior Technical Service Department for recommended spacings when conditions on your specific project vary from those shown. Beam must be checked against overturning